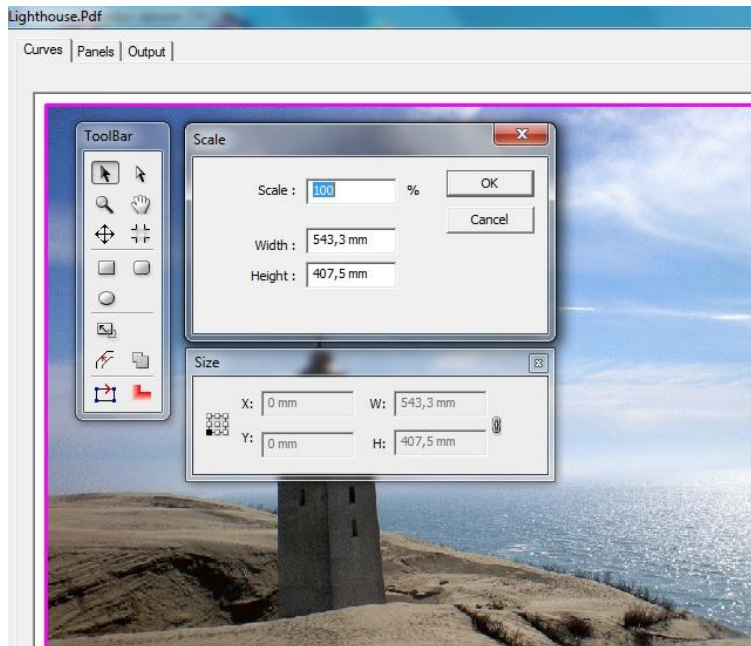


RELEASE NOTES for Prepare-it 4.0

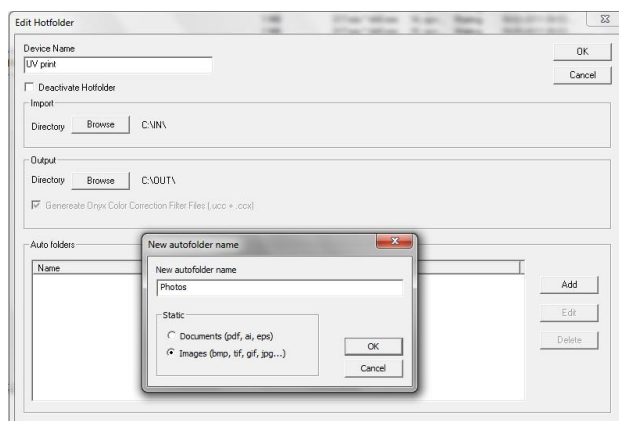
Highlights on Prepare-it 4.0

No.	Feature	
1	Updated graphic user interface in Prepare-it (3 tabs instead of 6)	☺
2	Import TIFF, JPEG, BMP, PNG and GIF image files	☺
3	Auto Folders	☺
4	Multi-page PDF handling (in connection with Auto Folders)	☺
5	New integrated editing tools available in the 'Curves' tab of Prepare-it allows for manipulations on curve point level.	☺
6	Create simple shapes on top of preview in Prepare-it	☺
7	Show router/V-Cut path on top of preview in Prepare-it	☺
8	Cropping function on top of preview in Prepare-it	☺
9	Eyelets function – to cut/print marks for mounting of eyelets	☺
10	Improved tiling	☺
11	Multilingual interface in Prepare-it	☺
12	New User Guide	☺
13	General improvements	☺

1. **Updated GUI** – 3 tabs instead of 6.
 - All tabs with same dynamic zoom method, same floating tool bars concept, etc.
 - **Scale tab** is replaced by scale icon in toolbar (Curves tab)
 - **Offset tab** is replaced by offset icon in toolbar (Curves tab)
 - **Register marks tab** is replaced by icon in toolbar (Output tab)



2. **New imports** – Prepare-it now imports JPG, TIFF, GIF, PNG and BMP formats.
 - These image files are wrapped in PDF using Adobe PDF library and can be processed like normal PDFs. These image files can be processed manually and automatically through auto folders.
3. **Auto Folder** – concept for automation of monotone preparation tasks of simple jobs – e.g. photo files from web-to-print solutions, multipage PDF's etc. can now be handled automatically with pre-defined actions.
 - Auto Folders are setup on the Prepare-it Server like the existing Hot Folders.
 - Auto Folder parameters are: file format, spot color name, layer name, trim box, art box, size, offset etc.
 - Output can be specified for “output no nesting” or “send to nesting queue”.



4. **Multi-page PDF handling** – Prepare-it processes multipage PDFs efficiently in connection with Auto Folders to automatically prepare all pages within the file.

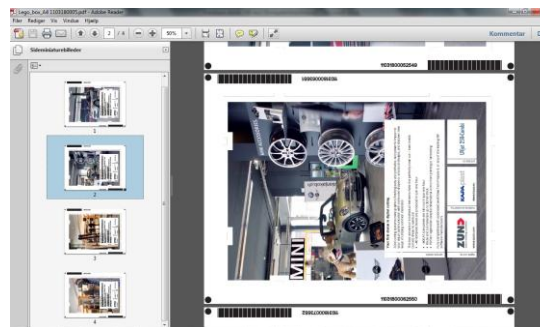
If a multipage PDF is imported into the Prepare-it Hotfolder, each page will create a job line in the job queue and require each line to be prepared manually.

File Name	Device	File Size	Dimensions	Curves	Status	Date	Panels	Type
Displays_Oc6 Page 1.PDF	UV print	<1 MB	297 mm * 401.5 mm	14, cp=97	Prepared	18-03-2011 09:53...	1	Win
Displays_Oc6 Page 2.PDF	UV print	1 MB	317 mm * 440 mm	14, cp=...	Waiting	18-03-2011 09:53...	?	New
Displays_Oc6 Page 3.PDF	UV print	1 MB	317 mm * 440 mm	15, cp=...	Waiting	18-03-2011 09:53...	?	New
Displays_Oc6 Page 4.PDF	UV print	<1 MB	270.5 mm * 420 mm	15, cp=...	Prepared	18-03-2011 09:53...	1	Win
Displays_outline Page 1.PDF	UV print	<1 MB	297 mm * 420 mm	311, cp=...	Waiting	18-03-2011 09:53...	?	New
Displays_outline Page 2.PDF	UV print	<1 MB	297 mm * 420 mm	311, cp=...	Waiting	18-03-2011 09:53...	?	New
Displays_outline Page 3.PDF	UV print	<1 MB	297 mm * 420 mm	311, cp=...	Waiting	18-03-2011 09:53...	?	New
Displays_outline Page 4.PDF	UV print	<1 MB	297 mm * 420 mm	15, cp=...	Waiting	18-03-2011 09:53...	?	New
Displays_simple_outline-F1...	UV print	5 MB	297 mm * 420 mm	313, cp=...	Waiting	18-03-2011 09:53...	?	New
Displays_simple_outline-F1...	UV print	5 MB	297 mm * 420 mm	314, cp=...	Waiting	18-03-2011 09:53...	?	New
Displays_simple_outline-F1...	UV print	5 MB	297 mm * 420 mm	313, cp=...	Waiting	18-03-2011 09:53...	?	New
Displays_simple_outline-F1...	UV print	4 MB	297 mm * 420 mm	314, cp=...	Waiting	18-03-2011 09:53...	?	New
K14_10_Folie_A_USA_2x2...	UV print	6 MB	2020 mm * 2020 mm	110, cp=...	Waiting	18-03-2011 09:54...	?	New
Lego_box_A4 Page 4.PDF	UV print	1 MB	210 mm * 297 mm	77, cp=...	Waiting	18-03-2011 16:23...	?	New
Lego_box_A4 Page 3.PDF	UV print	1 MB	210 mm * 297 mm	77, cp=...	Waiting	18-03-2011 16:23...	?	New
Lego_box_A4 Page 2.PDF	UV print	1 MB	210 mm * 297 mm	77, cp=...	Waiting	18-03-2011 16:23...	?	New
Lego_box_A4 Page 1.PDF	UV print	1 MB	210 mm * 297 mm	77, cp=...	Waiting	18-03-2011 16:23...	?	New

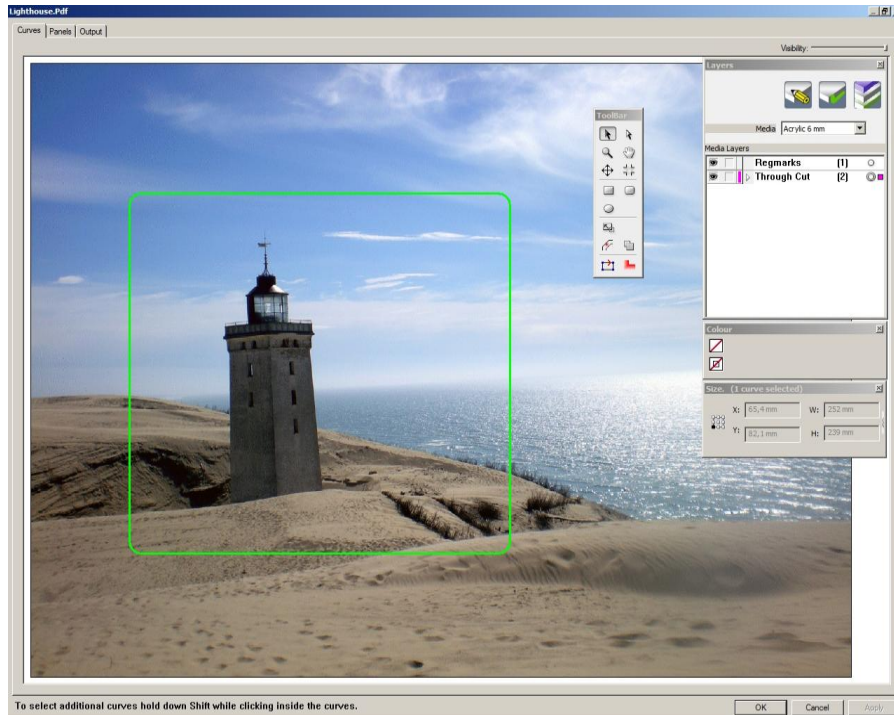
Now with the new Auto Folder system, the same multipage PDF can be prepared automatically in two ways:

- A new multipage PDF is generated in the output folder, where each page is fully prepared with register marks, barcodes, curve extractions and generation of cut files.
- Each page within the multipage PDF will create a job line in the Nesting Queue on the media specified and with the curve extractions pre-defined in the Auto Folder system.

Device	Media	Copies/Jobs	Area	Width	Height	Type	Created	Produce
UV print	Acrylic below...	8	1.26 m²	n/a	n/a	PDF		
UV print	Softfoam 10 ...	4	0.48 m²	n/a	n/a	PDF		
Lego_box_A4_R1	Softfoam 10 mm	1	0.12 m²	210.9 mm	298 mm	PDF	18.03.	
Lego_box_A4_R4	Softfoam 10 mm	1	0.12 m²	210.9 mm	298 mm	PDF	18.03.	
Lego_box_A4_R3	Softfoam 10 mm	1	0.12 m²	210.9 mm	298 mm	PDF	18.03.	
Lego_box_A4_R2	Softfoam 10 mm	1	0.12 m²	210.9 mm	298 mm	PDF	18.03.	

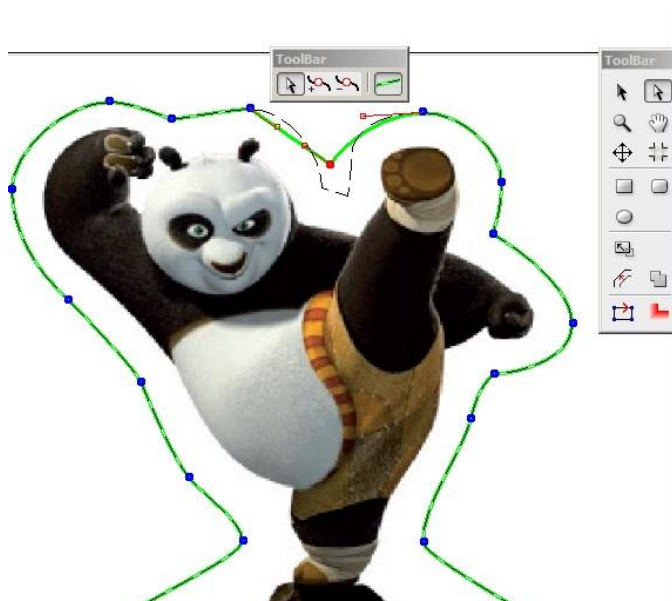


5. **New Editor included in Prepare-it** – a new improved editor is now included in Prepare-it. The floating toolbar concept, zoom method and general editor look is intuitive and easy to use and it complies with Adobe industry standards.



New tools are available in Prepare-it for 'last minute' corrections directly on top of the preview. Being able to correct and make small changes to designs directly in Prepare-it rather than having to reject the job back into design programs saves a lot of time!

- Edit on curve point level, drag handles, move curve points, add and remove points – all while viewing the original vectors. Editing possible with direct selection tool only.



6. **Create simple shapes in Prepare-it** – allows to generate cutting data inside e.g. a TIFF file without having to create a new document in Illustrator.
 - Create and position rectangles.
 - Create and position rectangles with rounded corners.
 - Create and position circles.



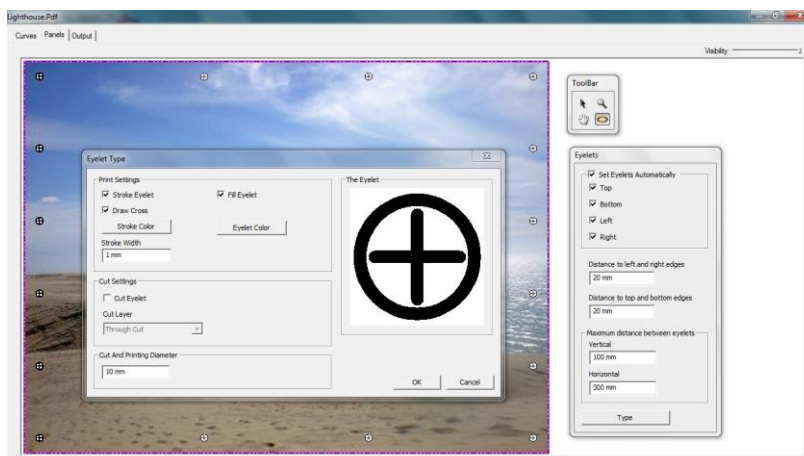
7. **Show tool path in Prepare-it** – displays the router path in the correct relation to the router bit diameter. This function is helpful to assure that routing is done on the right side of the selected curves and to inspect that the job will be processed correctly.



8. **Cropping** – feature for easy and quick generation and preparation of multiple print sizes/formats of e.g. window posters for stores where the campaign uses same image, but variable in size/format. Prepare-it easily crops to specifications and generates the print and cut ready data.
- Specify exact size or free hand crop.
 - Reposition and resize crop box.

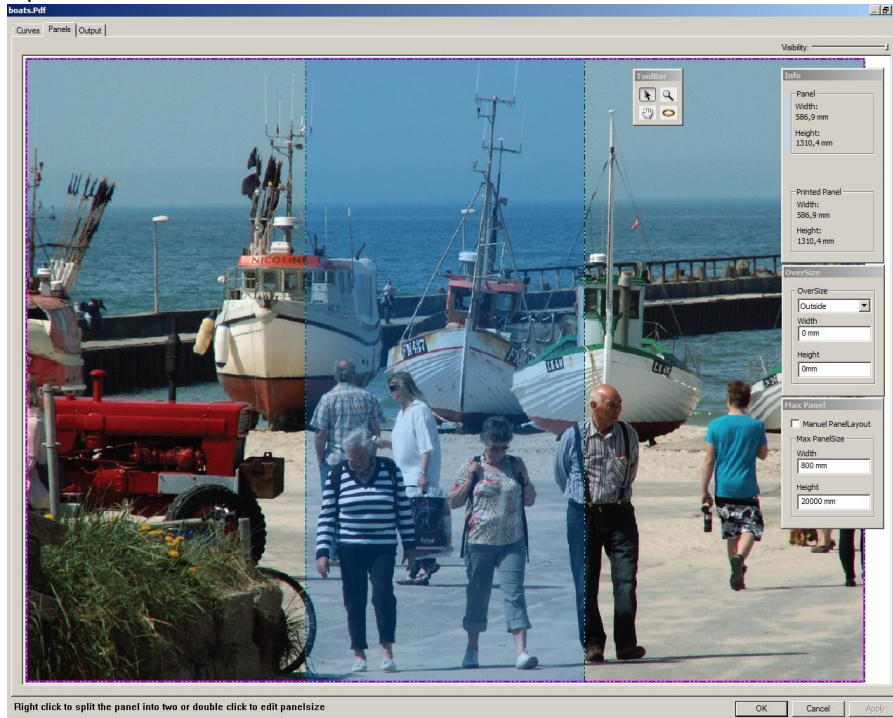


9. **Eyelets** – feature for generation of eyelets (grommets) for e.g. PVC banners and hanging signage in general.
- Specify eyelet layout, distances between the eyelets, diameter, shape and colors.
 - The eyelet function allows to print marks for positioning and to cut them out.
 - Save default eyelet settings to media for same processing on next jobs!
 - Place eyelets in top, bottom, left and right per panel (with Gap) and for complete jobs (single panel and multi panel with and without overlap).
 - The eyelet function can also be useful for creation of holes in the top two corners for hanging signage purposes!

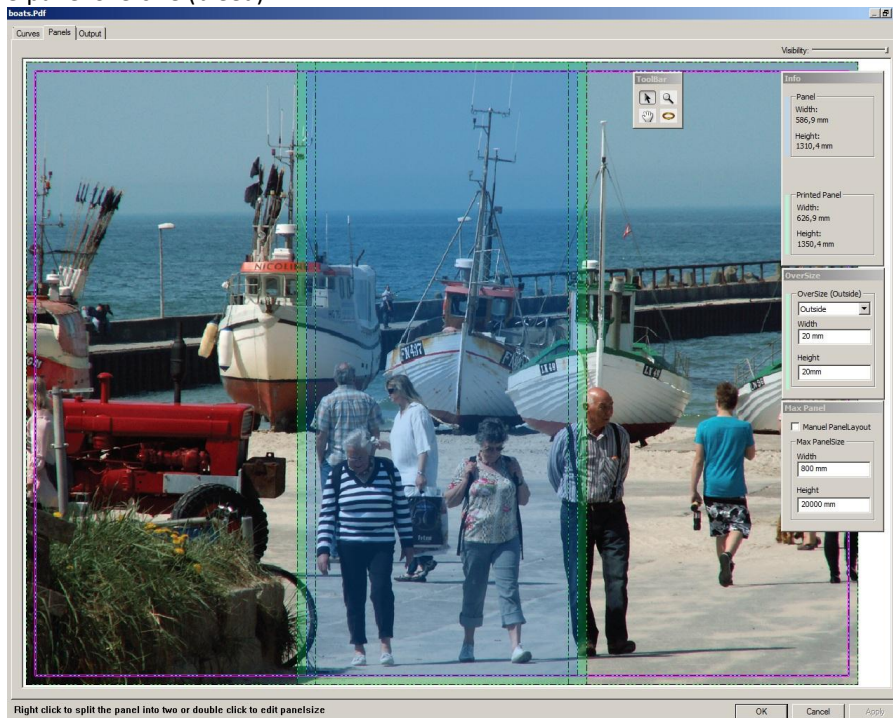


- 10. **Improved tiling** – includes new features for visual tiling of oversized graphics.
 - Specify size, oversize, overlap, gap, include extra white area etc.

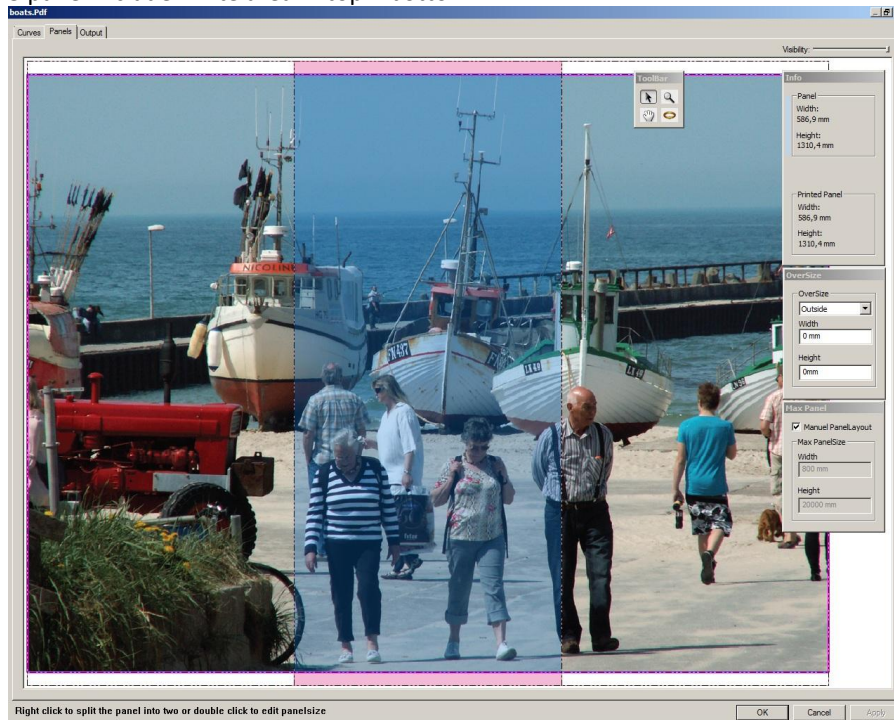
3 panels



3 panel oversize (bleed)



3 panel include white area in top + bottom



11. **Multilingual interface** –Prepare-it is now available in 3 languages: English, German and French. Languages are selected on client level, so different languages are possible between the client(s) and server.
12. **New User Guide** – included in Prepare-it software.
 - A PDF user manual is available directly in the software.
13. **General improvements**
 - Updated Adobe PDF library is included in Prepare-it.
 - Tiling is enhanced to compensate for limitations in size by Adobe.
 - Improved handling of job and nesting queues – faster reloading / updating of queues at start-up.